

TVLS - Revenue History

Chart #2

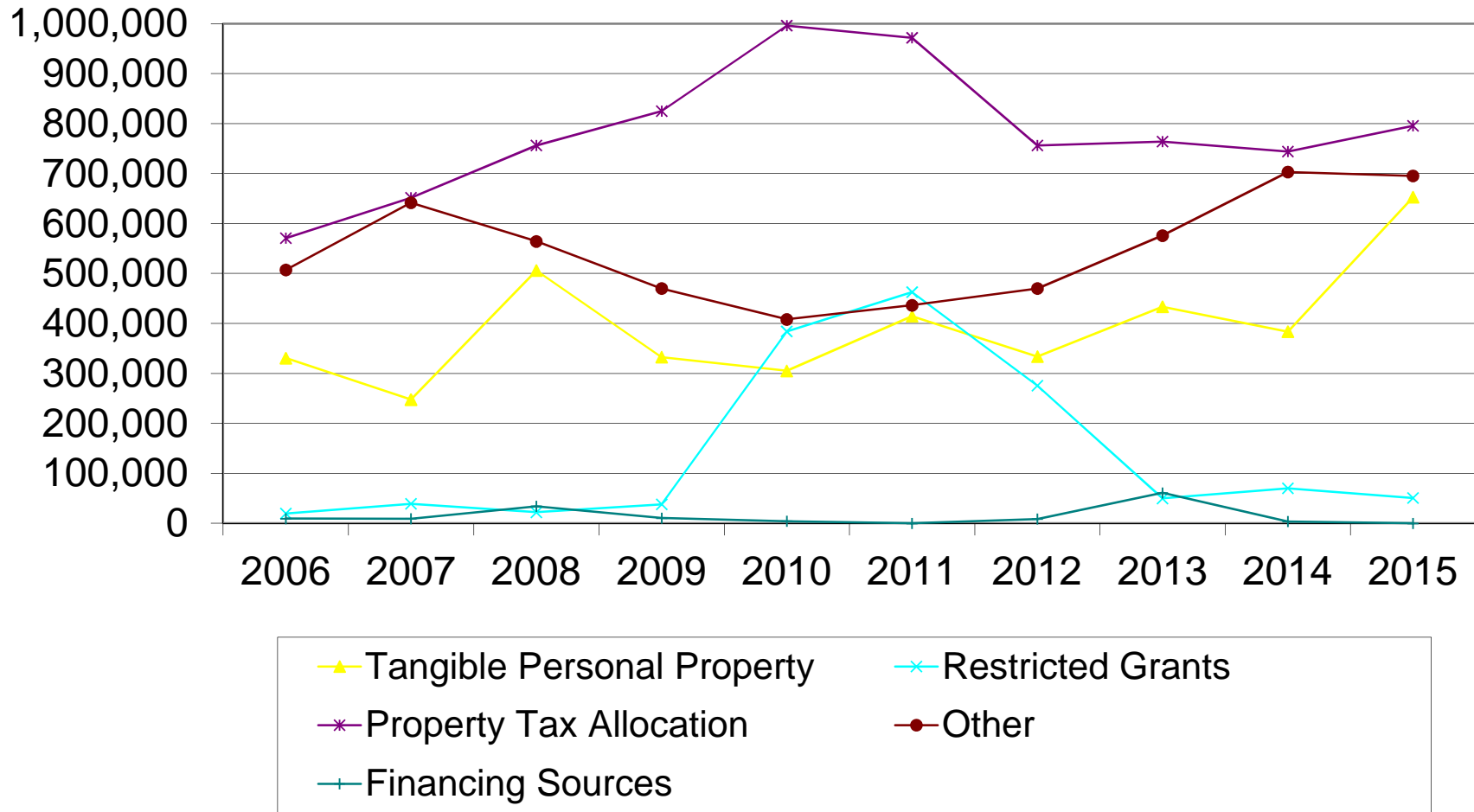


	<u>2006</u>	<u>2007</u>	<u>2008</u>	<u>2009</u>	<u>2010</u>	<u>2011</u>	<u>2012</u>	<u>2013</u>	<u>2014</u>	<u>2015</u>
Real Estate Taxes	4,715,547	4,890,710	4,590,729	4,764,386	4,711,295	4,629,268	4,716,107	4,719,589	4,672,312	5,585,319
State Foundation	5,521,239	5,490,667	5,744,342	5,772,981	5,375,752	5,209,039	5,334,579	5,408,635	5,891,432	6,266,246

Charts #2, #3, & #4 show how state revenues have been reduced and reclassified over time resulting in no real revenue increase for six years, from 2007 thru 2013. The state is quick to communicate the categories which increase, but conveniently skips over the decreases.

TVLS - Revenue History

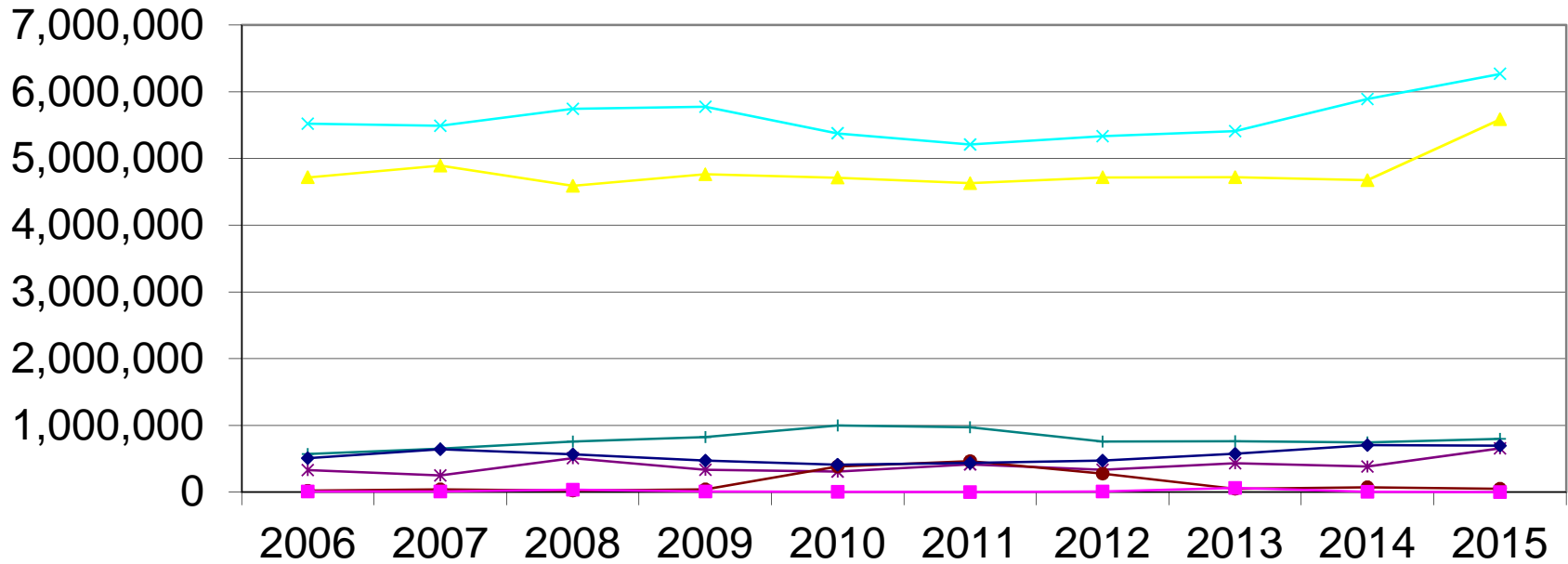
Chart #3



	<u>2006</u>	<u>2007</u>	<u>2008</u>	<u>2009</u>	<u>2010</u>	<u>2011</u>	<u>2012</u>	<u>2013</u>	<u>2014</u>	<u>2015</u>
Tangible Personal P	330,712	247,675	506,016	332,677	305,298	414,627	333,644	433,504	383,465	652,721
Restricted Grants	19,715	39,220	22,259	38,091	384,188	462,755	275,685	50,139	70,153	50,728
Property Tax Allocat	570,780	651,700	756,127	824,756	996,070	971,703	756,225	763,820	743,829	795,592
Other	507,067	641,609	564,348	469,853	408,240	436,493	470,020	575,993	703,106	695,424
Financing Sources	9,554	9,188	34,185	10,625	4,325	0	8,687	61,177	3,700	0

TVLS - Revenue History

Chart #4



	<u>2006</u>	<u>2007</u>	<u>2008</u>	<u>2009</u>	<u>2010</u>	<u>2011</u>	<u>2012</u>	<u>2013</u>	<u>2014</u>	<u>2015</u>
Real Estate Taxes	4,715,547	4,890,710	4,590,729	4,764,386	4,711,295	4,629,268	4,716,107	4,719,589	4,672,312	5,585,319
State Foundation	5,521,239	5,490,667	5,744,342	5,772,981	5,375,752	5,209,039	5,334,579	5,408,635	5,891,432	6,266,246
Tangible Personal P	330,712	247,675	506,016	332,677	305,298	414,627	333,644	433,504	383,465	652,721
Restricted Grants	19,715	39,220	22,259	38,091	384,188	462,755	275,685	50,139	70,153	50,728
Property Tax Allocat	570,780	651,700	756,127	824,756	996,070	971,703	756,225	763,820	743,829	795,592
Other	507,067	641,609	564,348	469,853	408,240	436,493	470,020	575,993	703,106	695,424
Financing Sources	9,554	9,188	34,185	10,625	4,325	0	8,687	61,177	3,700	0
Total	11,674,614	11,970,769	12,218,006	12,213,369	12,185,168	12,123,885	11,894,947	12,012,857	12,467,997	14,046,030