

SCHOOL DAZE

Published by

The Seniors of Mineral City High School
Mineral City, Ohio

DEDICATION

To ones who have been our friends and our teachers and our sponsors during our Senior year; to ones who have never been too busy to help us in any way possible; to ones who have always been for us whether we were winning or losing; to ones who we shall **always** appreciate and love; to the High School Faculty we dedicate this book.

The Class of '40

THE STAFF

Ex LibrisElsie Mae Fiddler
Administration. . . Alfreda McCartney, Carl Hoover
SeniorsGeraldine Nohl, Rose Pealy
JuniorsElsie Mae Fiddler, Anna Mae Mathey
Sophomores.Ruth Weaver, Chester Houze
Freshmen. . . Elsie Mae Fiddler, Anna Mae Mathey
AthleticsEdgar English, David Miskimen
Alumni.Ruth Weaver, Anna Mae Mathey
Activities.Geraldine Nohl, Rose Pealy
AdvertisingAlfreda McCartney, Carl Hoover
Elementary Grades-Alfreda McCartney Geraldine Nohl



ADMINISTRATION



Mr. Pingetock, Vice

S
C
H
O
O
L



Mr. Black, V. Pres.

B
O
A
R
D



Mrs. Bettler, Clerk



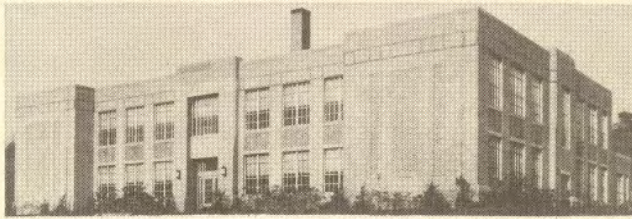
Mr. Fiddler



Mr. Beucler



Mr. Moore



Miss Getter

H
I
G
H
S
C
H
O
O
L
F
A
C
U
L
T
Y



Miss Zechiel



Mr. Davis



Mr. Zack, Supt.



Mr. Huff

THE NEW SCHOOL BUILDING

This much-needed, fine edifice was sponsored in July, 1935, by the Board of Education consisting of the following members: Pres. Chas. Fishley, F. W. Sattler, W. K. Weaver, I. J. Lebold, W. O. Markham, clerk.

A bond issue was authorized in August 1935 by a vote of the people (95% favorable) to cover the share of the project amounting to \$36,000.00 with state aid available amounting to \$24,000.00.

Ground was broken January 1, 1936, on the well-located site. It was completed, equipped and occupied in January 1937. An additional bond of \$7,000.00 had been voted for equipment and landscaping.

The following were members of the Board of Education at the time of occupation of the new building: F. W. Sattler, W. K. Weaver, K. G. Pyle, I. J. Lebold, M. J. Pingstock, W. L. Markham. The County Superintendent at that time was Chas. Barthelemeh, Charles J. Marr, Architect, Wendling Brothers, Company; Dover, Ohio, Builder.

This new school building has, in addition to its serene and attractive outside appearance, well-ventilated rooms and complete equipment. In fact, a modern, efficient education plant.

This building also consists of ten rooms, a large Study-hall, a well-equipped Commercial room, an Home Economics department, a well-equipped Industrial Arts department, a well-equipped Science department. With these advantages our school is one of the best.

VALEDICTORIAN



Alfreda McCartney

SALUTATORIAN



Anna Mae Mathey



Elsie Fiddler



Edgar English



Geraldine Nohl



Carl Hoover



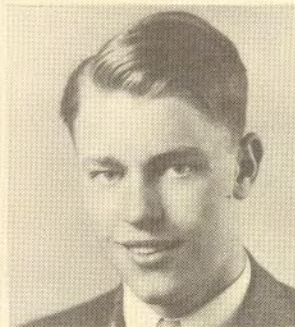
Rose Pealy



Chester Houze



Ruth Weaver



David Miskimen

Senior Low Down

Class Officers

Mr. Huff-----Adviser
Alfreda McCartney-----President
Chester Houze-----Vice President
Anna Mae Mathey-----Secretary and Treasure

MOTTO: "The door to success is labeled, 'Push!'"

COLORS: Blue and Gold

FLOWER: Gardenia

Who's who in the Senior Class?

Who's the tallest boy-----David Miskimen
Who's the tallest girl-----Elsie Fiddler
Who's the shortest girl-----Ruth Weaver
Who's the youngest girl-----Geraldine Nohl
Who's the youngest boy-----Chester Houze
Who's the best dispositioned-----Rose Pealy
Who's the smartest-----Alfreda McCartney
Who's the class Chemist-----Carl Hoover
Who's the quietest-----Edgar English
Who's the baby-----Anna Mae Mathey

Ruth-----"Slim"	Elsie-----"Shorty"
Geraldine-----"Jerry"	Edgar-----"Corkey"
Rose-----"Rose"	Carl-----"Porkey"
Anna Mae-----"Mattie"	David-----"Dave"
Alfreda-----"Freda"	Chester-----"Ches"

Elsie Fidler:	Junior play-3 Girls Chorus-1-2-3-4 Secretary-3
Ruth Weaver:	Girls Chorus-1-2-3-4 Band-1-3 Junior play-3
Anna Mae Mathey:	President-1 Secretary and Treasure-4 Junior play-3 Girls Chorus-1-2-3-4 Prince of peace-3-4 School paper-3 Booster club President-2
Alfreda McCartney:	President-4 Dramatic club president-3 Girls Chorus-1-2-3-4 Junior play-3 School paper-2-3-4 Chemistry Club President-3 Prince of Peace-1
Rose Pealy:	Girls Chorus-1-2-3-4 School paper-3 Booster Club President-3 Treasure-3 Junior play-3
Jerry Nohl:	Girls Chorus-1-2-3-4 School paper-3 Senior play-2 Vice President-3 Secretary and Treasure-2 Prince of Peace-4 Commercial Club Vice Pres.-4
Karl Hoover:	President-2-3 Basket Ball-2-3-4 Scrappy Tigers Sec. and Treas.-4 Junior play-3 School paper-2-3-4
Edgar English:	Basket Ball-1-2-3-4 Vice President-2
David Miskimen:	(Newcomer in senior year) Basket Ball-4
Chester Houze:	(Newcomer in senior year) Basket Ball-4 Vice President-4

CLASS HISTORY.

The Senior Class of 1940 has spent four happy years together. But all good things must come to an end.

The 1937 Freshman Class enrolled with fifteen (15) students. The Freshman and Sophomore years were uneventful, except that during these two years the class held its own in every activity and participated whole-heartedly in all school extra curricular activities. The class was sponsored by Miss Day and Miss Magill. The outstanding event was the Freshman day when we all wore something "Green" and carried a "Brick" wherever we went and also the Freshman-Sophomore reception held at the auditorium.

The Junior year was a busy one for every member of the class. The seniors were entertained at a banquet given in their honor. The class also presented their first class play entitled "Baby Steps Out." The play was directed by Miss Davis and Miss Getter. We also put out the annual basketball booklet.

So dawned the Senior year destined to be one of the outstanding years of the class history.

This year we presented our play entitled "The Shadow of Terror" with all members of our class taking part, we presented it here and at New Cumberland.

The graduation play entitled "The Pioneers" will be given May the 24th.

During this year we all worked hard to produce this annual the first produced since 1914-1915.

The entire class has given to this school a distinction in musical, athletic, and scholastic affairs. The class leaves Mineral City High School in the usual manner.-----THAT OF SETTING A RECORD!

CLASS PROPHECY

So you would like to know your fortunes? Then listen and ye shall hear what is to be, for I am the seventh daughter of the seventh daughter and few are those who know the secrets of the crystal. Ah, what is this I see? It is ten years from now. I seem to be approaching a gate and it swings open to my touch and I find myself inside a beautiful garden. And now I see forms beginning to take shape. I see a beautiful hospital and whom do you suppose I see? It is Ruth Weaver. She is living quietly as Superintendent nurse at Mercy Hospital. And here comes another girl. She is Elsie Fiddler. She has majored in nursing and is one of the best ever to enter the hospital at Mercy. And now I see a great dam under construction and pouring over plans, as myraids of human beings work below I see David Miskimen. He is the engineer who conceived the plan. Now I see cows, numbers and numbers of fat sleek lowing cattle coming home at night to the large dairy barns, and near the barn stands Chester Houze. He indeed is a great dairyman. In an elegant beauty parlor I see a woman dressing the hair of a friend. They seem to be chatting. The beautician seems to be Rose Pealy. And now, I find myself looking at a sign over a desk in an elegant office. The sign reads: "The Society For The Prevention Of Cruelty To Dumb Animals." Behind the desk sits Anna Mae Mathey, who is the president. A beauty parlor with the sign "Nothing is Impossible". I see Geraldine Nohl as manager and seated under the hair dryer are several of her friends who are challenging Geraldine to make good her slogan. Now I see, a large platform in a distance. There seems to be a crowd gathering. As I come closer I see a lecturer on the platform. Here a familiar voice is pleading for a pension for old maids after 60. As I come closer I see it is Karl Hoover who is presenting the cause. From peaceful kin to the thundering of machinery the crystal takes me and I see faithful Edgar English standing in the door way to the press room of the greatest daily paper in Ohio. Now I see in this garden they are celebrating the dedication of a new building and their speaker is their class president, Alfreda McCartney.

CLASS WILL

State of Ohio
County of Tuscarawas
City of Mineral City
May 24, 1940

We, the members of the Senior class of Mineral City High School, having completed our journey through the land of knowledge and having reached the goal in full possession of sound minds, memories, and understanding, knowing that graduation and consequent passing from high school life is the predestined lot of all faithful seniors, find that during our high school careers we have accumulated a considerable estate, common sense, experience, and a vast store of earthly treasures, in all due respect and thoughtfulness toward our heirs and friends do make, ~~declare and publish this~~ our last will and testament, hereby revoking and making void all former wills by us at any time heretofore made.

ITEM I

To our mothers and fathers we will our deepest love and appreciation for their untiring efforts which have made it possible for us to attend school.

ITEM II

To Mr. Zack, our principal, we leave our appreciation for the interest he has shown us during our high school life.

To Miss Getter, we will our sincere love and devotion and deepest gratitude for steering us safely through our last year in high school.

We bequest to Mr. Huff our genuine thanks for the time, energy and thought he has given us in making our dreams for the Annual come true.

To Mr. Davis we leave the hope that all his athletic teams next year will be winners, and also our appreciation for the comradeship and untiring efforts in teaching us teamwork.

To Miss Zechiel gratitude for a thorough grounding in English and other subjects.

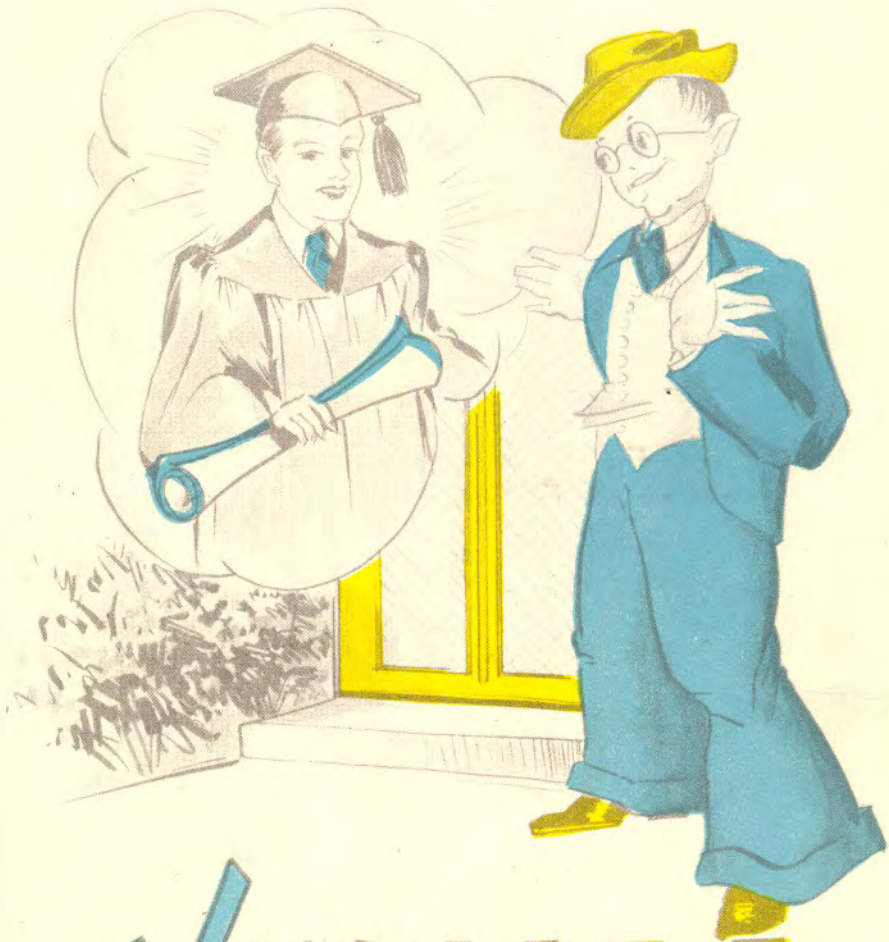
ITEM III

To the Juniors, Sophomores, Freshmen we leave all our unfinished work.

AUTOGRAPHS OF SENIORS

Chester
 Anna Meiner
 David Munk
 Ruth Munk
 Mary Karl Hoover
 Geraldine Gohl
 "Genny"
 Alfreda M^{rs} Cartney
 "Rose"
 Eric M^{rs} Fiddler
 Edgar English
 "Cady"

AUTOGRAPHS OF FRIENDS .



JUNIORS



FIRST ROW

Wallace Pealy
 Betty Jones
 Isabelle J. Fiddler

Mary Lou Walter
 Rosetta Jones
 Loretta Levensgood

SECOND ROW

Dorothy Reed
 Ruth Tate
 Doris Hainey

Millie Fabiano
 Waneta Eckleberry

THIRD ROW

Ruth Pealy
 Dorothy Crone
 Amelia Nasti

Irene Martin
 Geraldine Powell
 Lula Mae Zurfley

FOURTH ROW

Teacher,
 Miss Zechiel
 Charles Mathey

Wilbur Bailey
 Robert Baker
 Robert Maurer

CLASS OFFICERS

President--Robert Maurer
 Vice-President--Wilbur Bailey
 Secretary and Treasurer--Amelia Nasti

Junior Class History

All the world's a stage, and all the men and women merely players.

Freshmen -- One bright morning in September, about three years ago, a starry-eyed group of youngsters decided they would like to go on the stage. Of course, we knew very little about it, and little did we realize that we could not act.

Sophomores -- The next year we advanced to property managers. Although we were a bit older and were granted more privileges, we sympathized with the stage hands because we had been in the same boat the year before.

Juniors -- This year we have come up one more step in our acting. We have become understudies and we let the other classes know we could do things as well as they. We have selected our class flower and class color. Already we have made up our minds we will be the best class ever.

Seniors -- Soon we will be the leading characters. Of course, we cannot see into the future, but we hope to make the Senior year our best and then reach that shining goal--

GRADUATION!



SOPHOMORES



FIRST ROW

Jane Lindsay
 Mary Louise Olivet
 Doris Fiddler

Vanda Saitley
 Faye Jones
 Betty Reese

SECOND ROW

Ruth Binkley
 Mary Lou Davey
 Velma McCartney

Betty Baker
 Helen Martin
 Jean Weaver

THIRD ROW

Norva McCartney
 Margaret Mishkin

Robert Ludlam
 Raymond House

FOURTH ROW

Earl Fisher
 William Abel
 John Bartos

Jay Myers
 John Weaver

FIFTH ROW

Teacher,
 Miss Zechiel

William Straub
 John Wright

CLASS OFFICERS

President--John Bartos
 Vice President--Betty Baker
 Secretary and Treasurer--William Abel

SOPHOMORES

This year sees us marching along as Sophomores. We have advanced one year in our life. We are in the high school to fill a place that we have striven through our Freshman year.

We want to make this year a good one and we are trying to fill our place as upper classmen. We have elected our officers and have been in many entertainments through-out this year.

Next year we hope to try and assume the important role as Juniors.

We hope to obtain our success by striving to learn the principle fundamentals while in school.

The Sophomores, boys and girls, have majored in basketball. We are a group of pupils who will not live down a "defeat."

Also, we have done a grand dramatical piece of work. We gave a play entitled "Sis Perkins." The Sophomores who participated are as follows:

Velma McCartney-----	Elvira Sniffkins
John Bartos-----	Baldwin Chandler
Jean Weaver-----	Mrs. Chandler
John Weaver-----	Jay Schuyler
Betty Baker-----	Violet Aster
Helen Martin-----	Marcia Chandler
Doris Fiddler-----	Lydia La Salle

In our progress through this good old Mineral High School we hope to make it a better place to go to school and help all our lower classmen to accomplish their ends.

We always wish to help those who need our help and when our school work is done, we want to feel that we have done our best to make our high school days successful ones.



FRESHMEN



FRONT ROW

Jack Steinick
 Jean Jones
 Bernadine Bellamy
 Jane Miskimen

Mary Emery
 Robert Steinbaugh
 Donald McKinney

SECOND ROW

Adrian Stull
 Marie Daniels
 Annie Demonte

Pauline Fabiano
 Florence Crone
 Charles Miller

THIRD ROW

Joan Lindsay
 Ruth Stotzer
 Irene Baker

James Merryman
 Jack Pingstock
 Jack Martin

FOURTH ROW

Clermont Brannon
 Ida Stotzer
 Marjorie Johnson

Walter Zurfley
 Dean Douglas
 Thomas Smitley

FIFTH ROW

John Pealy
 Betty Powell
 William Jones

Phyllis Straub
 Junior Davey
 Arthur Milhorn
 Teacher--Mr. Huff

CLASS OFFICERS

President--Bernadine Bellamy
 Vice President--Phyllis Straub
 Secretary and Treasurer--Ida Stotzer

THE FRESHMEN

We are the Beginners of Tomorrow!

In September we started our new lives as boys and girls of tomorrow. Ahead of us, the road seems long and tiresome, but truly, it isn't. Already, we have been accepted in the high school by a reception given by the Sophomores.

We have our own place to fill in, and we want to make the best of it. We have elected a president, vice-president, secretary and treasurer of our class and also have had parties and a play which was presented by the Freshman and Sophomore classes together.

All these things have brought us to one more step as being upper classmen instead of "Green Horn Freshies" and we hope to accomplish the work that is out before us so we will be the ones of tomorrow instead of just the beginners.

Next year, we will leave this "Realm of Beginnings" and prepare to take the respective duties of the Sophomore class. That will mean another great step in our progress in the Mineral City High School. We are working so that we may make our parents, teachers, relatives, and our friends proud of us, and also to give ourselves the confidence that rightfully belongs to each and every person when they have stepped across the threshold of graduation into the unknown of the world beyond. We are preparing for this, in this, our first year of high school. If we are successful now, we are more likely to become successes in later life.

Build foundations early
Study while you may,
Be cheerful, kind, considerate,
Help classmates along their way.



ATHLETICS

HIGH SCHOOL TEAM



First Row: Carl Hoover, Edgar English, Wilbur Bailey, Chester Houze, David Miskimen
Second Row: Thomas Smitley, Carl Gsell, John Weaver, John Bartos, Raymond Houze, Coach, Mr. Davis

JUNIOR-HIGH TEAM



First Row: Eugene Bozman, Eugene Smitley, Kenneth Rainsburg, Evron Jones, Donald Steinbaugh
Second Row: Manager, Thomas Smitley, Thomas Emery, Leland Swinford, William Zurfley, Coach, Mr. Davis

Basket Ball Summary

The Mineral City Basket ball squad pride off the lid of the 1939-40 season with two consecutive wins. They then fell behind and lost one game after another until they defeated Dundee in a hard fought battle. After this they lost three more before winning from a classy Salem West Virginia team. The following week they rounded out the season with a victory over Sherrodsville.

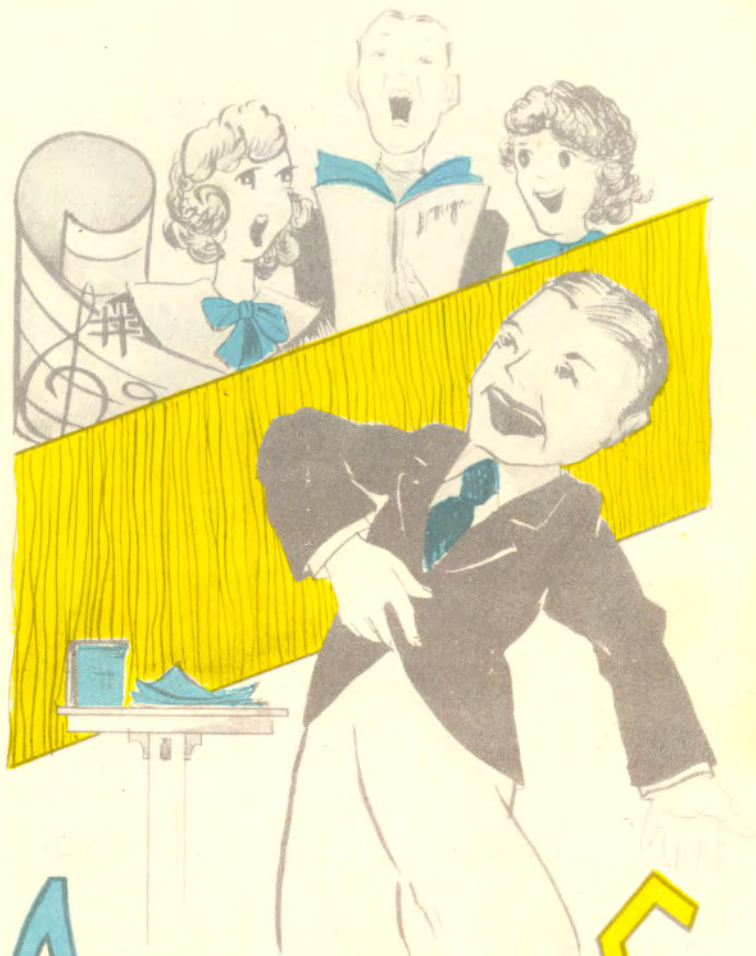
In the County Tournament they lost to Tuscarawas in a hair-raiser. They were then defeated by Port Washington in the consolations which brought an end to their basketball efforts for this year.

The 1940-41 basketball squad will lose the services of four lettermen whom are, Chester Houze guard, Edgar English guard, David Miskimen forward, and Carl Hoover forward.

Results Of This Years Games

		Mineral--Opponent
November	18. Alumni-----	18 14
December	1. Port Washington-----	29 28
December	8. Baltic-----	37 40
December	9. East Sparta-----	21 29
December	15. Gnadenhutzen-----	21 23
December	22. Stonecreek-----	31 32
January	5. Sugar creek-----	19 35
January	9. Port Washington-----	24 27
January	12. Strasburg-----	26 30
January	16. East Sparta-----	21 28
January	19. Midvale-----	24 55
January	26. Dundee-----	33 26
January	27. Stonecreek-----	21 26
January	30. Bolivar-----	22 32
February	2. Tuscarawas-----	26 60
February	3. Salem West Virginia---	38 25
February	10. Sherrodsville-----	46 25
February	13. Bolivar-----	30 50
February	16. Tuscarawas-----	28 30
February	17. Port Washington-----	32 35

The Junior High team experienced a very successful season. Winning fourteen and losing three.



ACTIVITIES

DEBUT MAIDS OF THE YEAR



Jean Jones, Peter
Jean Graves, Doris
Hickler.

CHIEF LEADERS



Mary Lou Walter,
Betty Ann Brown,
Valerie McCraken.

MIXED GLEE SOCIETY



- FIRST ROW: Orris Farber, Leon De Monte, Raymond
Fischer, Margabel Erick, Donald Schinn.
SECOND ROW: Iris Stalbaum, Robert Sheffer,
Lynlyn Mabey, Anne Marie Johnson, Walter Stotter,
Ruth Mae Erickson, Beverly Joffens, Lois Brin-
den.
THIRD ROW: Adair Farber, Le Fern Stalbaum,
Charles Miller, Glen DeCromy, Isabella Collins,
Dawn Stalbaum, Edna Eddy.
FOURTH ROW: Mary Jean Lortie, Clara Jane Morris,
Jack McInaney, Helen Farnsworth, Betty Lou Brin-
den, Lois Weber.
FIFTH ROW: Clarence Day, Roger Lindsay, Donald
Stalbaum, Jack Finstona, Betty Pealy, Jack
Stalbaum.
SIXTH ROW: Carlene Martin, Glen Wren, Joan
Weaver, Walter Loring, Harold Jones, Jack Martin.

Director-----Harold Jones.

Two absent from this picture are Jack and
Gail Leubert.

THE SUMMER DAY



M. C. H. S. BAND

Our school has succeeded in organizing a band which consists of fifty pupils from the fourth grade including high school. Through their efforts and the help of the band mothers they purchased maroon and white uniforms for the entire band. It is directed by Mr. Pixley. They have played in Dundee, Baltic, Midvale and Strasburgh. Their president is Donna Blausenhaur and their Secretary and treasurer is Garaline Houston. The following pupils participated in the all-county band:

Isabelle Collins-----	Clarinet
Adair Farber-----	Clarinet
Sara Emma Bailey-----	Clarinet
Glen McCreery-----	Clarinet
Donna Blausenhaur-----	Saxaphone
Jack Pingstock-----	Trumpet

DEBATE TEAMS

We were very fortunate in having Miss Zechiel with us this year. She organized two debate teams in connection with her public speaking class. We feel that through her efforts debating has been inauguated as a permanet activity in this school. The State debate question used throughout the season was: "Resolved that the government should own and operate all railroads." The affirmative team consisted of Rose Pealy, Alfreda McCartney, Robert Baker, Geraldine Powell. The negative team consisted of Geraldine Nohl, Karl Hoover, Anna Mae Mathey, and Elsie Fiddler.

M. C. H. S. GLEE GLUBS!

There are fifty of the girls in the girls glee club. Every Monday and Friday they meet their rehearsals they sing numerous two and three part songs. There are thirty six boys in the boys glee club. They meet together on Mondays and Thursday with their director, Mr. Harold Pixley They spend most of their time for rehearsals singing two-part songs. Both boys' and Girls' glee clubs sing together, which is delightful to hear. They sing "Mighty like a Rose", "Shortnin' Bread", "You are Music", "Fire Flies" and "April Showers". The pianist for the glee clubs is Dorothy Mae Reed

Mineral--Cumberland 4H Club

The Mineral--Cumberland 4H Club was organized March 12. This is the first one to be organized in these communities for some years. The following officers were elected:

President-----Chester Houze
Vice-President-----Raymond Houze
Secretary and Treasurer-----David Miskimen
News Reporter-----James Merryman
Recreation Leaders--Jack Pingstock---Dean Douglas
Mr. Zack and Mr. Rudolph are our Club Advisors.

Basket Ball Team

This year the senior girls were the winners over all the other teams. We played by classes. We played every Monday and Friday one period. Honorable mention goes to the Sophomores who came out second. Edgar English refereed all our games and Miss Getter was our instructor.

Photography Club

The Photography club was organized October, 1939. We made money by selling pencils and we purchased a developing outfit. We have learned how to develop negatives and print pictures. We meet once a month at the homes of the members.
President-----Earl Fisher
Secretary and Treasurer-----LaDeane Steinbaugh
Advisor-----Violet Mathey

Home Economics Club

This year the seventh and eighth grade girls formed a Home Economics club. The club sponsored a Halloween party. The proceeds of this party were used to buy equipment for the Home Economics laboratory. The elected officers are as follows:

President-----Margaret Ann Knotts
Vice President-----Helen Farnsworth
Secretary and Treasurer-----Sara Emma Bailey

"Baby Steps Out"

Baby has reached the age when she would like to have nice new clothes and be able to go out, with the young men instead of having to wear Madges made-over dresses and be forced to go with Little Willie next door. Edna thinks there is time enough to look after Christina after she has properly married Madge, but Elmer and Baby think differently and so Baby gets her man and Madge is still sitting at home waiting for one to come around.

Elmer Morris-----Karl Hoover
Edna Morris-----Alfreda McCartney
Baby-----Rose Pealy
Madge-----Geraldine Nohl
Mr. Maybank-----Robert Baker
Mary-----Elsie Fiddler
Betty-----Anna Mae Mathey
Jane-----Ruth Weaver
Willie Baxter-----John Weaver

Directed by Miss Davis and Miss Getter.

Furniture by Courtesy of the EARLY FURNITURE CO. at
Dover, Ohio.

"THE SHADOW OF TERROR"

The Senior Class of the Mineral City High School of the class of 1940 presented this mystery. The play cast included all the seniors. The play deals with a girl named Peggy Powers. She has come back to inherit her father's money. After she arrives, she finds out she must live in this spooky house for five years in order to get the money. Her aunt does everything in her power to get her to leave. Strange happenings occur. All the strange happenings are revealed in the end.

Julia Van Der Wert-----Geraldine Nohl
Sigmund Van Der Wert-----Chester Houze
Peggy Powers-----Anna Mae Mathey
Helen McArthur-----Rose Pealy
Emma-----Elsie Fiddler
Topaz-----Ruth Weaver
Jewel Pennington-----Alfreda McCartney
Pringle-----Carl Hoover
Morley Kenwood-----David Miskimen
Steve Wellington-----Edgar English

ELEMENTARY

GRADES

FIRST GRADE-----Gwendolyn Beucler

Bertha Abel, Velma Leona Abel, William Barkheimer, Shirley Bartos, Kenneth Beers, Robert Lee Barkheimer, Norma Jean Brinkman, Charles Carling, Mary Jane Crilley, Marvin Davidson, Jean Douglas, Doris Farnsworth, Janet Giles, Richard Jackson, Vivian Johnson, Lester Ley, James Moreland, Beverly Nedrow Freda Sprankle, Glen Stull, Charles Gross.

SECOND GRADE-----Violet Mathey

Joe Argento, Mary Louis Baker, Faye Barkheimer, Jack Boggins, Russell Brannon, Elva Brown, Marjorie Carling, Ronald Emory Chaney, Leota Cochran, Betty Lou Deubner, Janice Dolvin, Lawrence Ewing, Cathleen Powell, Gloria Ann Reed, Ida Marie Sprankle, Ablert Vesco, Leslie Zurfley, Thomas Finley, John Flowers, Helen Fowler, Marjorie Giles, Ernest Gribi, Margaret Gross, Maxine E. Hott, Robert Jones, Carl Kirby, James Labus, Clarence Ley, Paul Ley, Forrest Nedrow, Bobby Nelson, Anna Mae Pealy.

THIRD GRADE-----Francis Lux

Peggy Lou Beers, Warren Leroy Binder, Raymond Brannon, Carolyn Flo Brinkman, Paul Edward Brinkman, Gilbert D. Brunk, Patty Jean Crilley, Mary Joan Crone, Loretta Hazel Daniels, Donna Douglas, Robert Deubner, Rose Ann Eberhardt, Gladys E. Ewing, Donald E. Farnsworth, Clarence Fiddler, Francis C. Finley, Leon Jay Giles, Norva Lucille Gintz, Anna Martha Gribi Daniel Irwin Lechner, Glenn Ley, Jack Douglas Ley, Richard Lee Lindsay, Martha Ann Markham, Joanna Maxine Reidle, Fredrick H. Stotzer, Kalamann N. Stull, Billy Walters, Josephine Weller.

FOURTH GRADE-----Anabelle Rudolph

Clarence Abel, Mary Patricia Boggins, Franklin Brinkman, Patricia Jean Butler, Helen Crone, June Daniels, Greta Deubner, George Dolvin, Willajané Emery, Williard Fiddler Jr., Martha Flowers, Deloris Fowler, Donald D. Gintz, Norma Jean Gross, Barbara Jean Hoffman, Delmer Houston, Mervyne Houston, Angeline Johns, Fred Adrian Ley, Evelyn M Mathey, Russel Martin, Jackoline McCreery, Leonard M. McDonald, Donald Meek, Donna Jean Meek, Adora Jean Meek, Thomas E. Naus, Pauline Ruth Rausch, Dorothy Louise Reidle, Louis Gene Reidle, Glenwood Rohrer, Bertha Mae Sprankle, Louise Sprankle, Iris Elaine Steinbaugh, Donald Steineck, Edith Lucille Stull, Lester Swinford, Frances Vesco, Orwen Weaver, Richard Zurfley, Paul E. Zurfley.

FIFTH GRADE-----Florence Hoffman

Helen Abel, Kenneth Barkheimer, Mary Louise Birchfield, Joseph Boggins, Lois Brinkman, Marilyn Brinkman, Dick Butler, Eileen Carling, Junior Crilley, Pearl Daniels, Stephan Eberhardt, Ruth Farnsworth, Dorothy Fisher, Cletus Gintz, Rosemary Hoffman, Ardell Jones, Vaughn Ley, Willard Ley, Robert Lindsay, Roger Lindsay, Rosemarie Martin, Rober Lindsay, Betty Merryman, Eddie McCreery, John McDonald, Weldon McDonald, Clarence Maus, Russell Pealy, Robert Schafer, Paul Sprankle, Rose Ann Steinbaugh, Wilber Steineck Jr., Helen Stotzer, Jack Weber Jr. Ethel Hummel, Earl Johns.

SIXTH GRADE-----Emma Gudekoontz

Ida Mae Abel, Dorothy Faye Bailey, Howard Barkheimer, Kitty Lou Beucler, Margaret Brink, Calvin Brunk, James Crilley, Frankie De Monte, Lena DeMonte, Lee Douglas, Max Douglas, Marcella Eberhardt, Miriam Ewing, Orris Farber, Willis Dean Gintz, Hazel Gross, Wilma Gross, Betty Jean Hankinson, Jolane Johnson, Lee Jones, Junior Krieger, Earl Ley Carl Manack, Vivian Martin, Joanne Meisner, Jack McKinney, James Naus, Raymond Reed, William Reidle Jr., Martha Jane Rohrer, Evelyn Shroyer, James Smith

SEVENTH GRADE-----Darwin Davis

Charles Baker, Marjorie Brannon, Marybel Brick
Anna Marie Brinkman, Ruth Mae Brinkman, Pauline
Crilley, Gale Deubner, Adair Farber, Helen Farn-
sworth, Gilbert Fiddler, Vivian Fisher, Jane
Herron, Margaret Ann Knotts, Elizabeth Labus,
Dona Ley, Gene McInnes, Clara Jane Morris, Jack
Pealy, Seward Shuman, Eugene Smitley, Raymond
Sowers, Donnie Steinbaugh, La Deane Steinbaugh,
Leland Swinford, Lois Weber, Ruth Wise, Mary Jane
Zurfley, Billy Zurfley.

EIGHTH GRADE-----Dorothy Getter

Maxine Abel, Sara Bailey, Donna Blasenbauer,
Eugene Bozman, Betty Brinkman, Homer Brunk,
Angeline Cappillo, Betty Carpenter, Isabelle
Collins, Owen Daniels, Rose De Monte, Thomas
Emery, Raymond Fiddler, Patricia Hoover, Carolin
Houston, Shirley Johnson, Evron Jones, Donna
Knotts, Maxine Martin, Carl McCartney, Rollin
McCreery, Glen McCreery, Betty Pealy, Kenneth
Rainsburg, Alberta Reed, Velva Steinbaugh, Walter
Stotzer, Glen Wise.

SEVENTH GRADE OFFICERS:

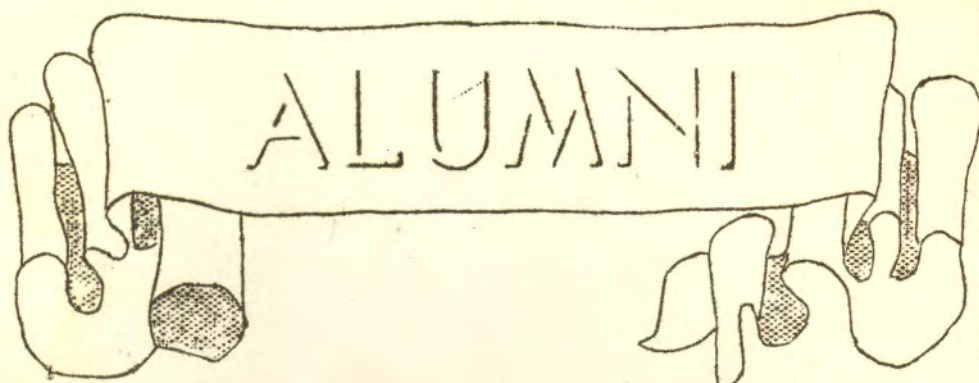
Helen Farnsworth-----President
Gale Deubner-----Vice-President
Margaret Ann Knotts-----Secretary-Treasurer

EIGHTH GRADE OFFICERS:

Velva Jean Steinbaugh-----President
Dona Blasenbauer-----Vice-President
Sara Emma Bailey-----Secretary-Treasurer

Miss Collins is our music teacher for the elemen-
ary grades.

Gale Deubner was first in the Marble tournament
and Frankie De Monte was second.



1939

Bernice Yoss
Ruth Baker
Gladys Binkley
Richard Carpenter
Nora Fiddler
Fred Fishley
Verlon Hankinson
Alexander Lindsay
Edwin Markham
Pearl Martin
Robert Osborn
Grace Stotzer
Mary Weisen

1938

Elmer Bell
Jack Bozman
Betty English
Orpha Gsell
Fred Hoover
Mary Louise Mathey
Clyde McKinney
Dorothy Zurfly
Kathryn Lockard

1937

Dean Ackerman
Edith Bishop
Opal Barkheimer
Pauline Hoover
Ruth Hammell
Robert Markham
Lester Martin
Thomas Martin
Louis Pealy

1937 (cont.)

Glenn White
Mary Jane Kobis
Wade Rudolph
Robert Sattler
Elizabeth Weaver

1936

Ethel Bell
Sammy Joe Gordon
Jane Hoover
Sara-Louise Mathey
Margaret McDougal
Josephine Nasti
Elmo Nickles
Lucille Pealy
Annie Smith
Joseph Mathey

1935

Elizabeth Baker
Charles Binkley
William Fishley
Lewis Herron
Mary Lockard
Ruth Markham
Eileen Markley
Mary McKinney
John Ready
Edna Mae Walter
Marjorie Weaver
Harry Whitten
Richard Wilson
Carl Blasenbauer
William Black

1934

Calvin Bell
Mary Jane Fishley
Russell Mathey
Theodore Mathey
Clarence McKinney
John Nemetz
William Rudolph
William Sattler
Leland Sponseller
Frank Scott
Calvin Strong
Helen Hoover
Marie Lebold
Isabelle Jones
Freda McCartney
Theda Pifer
Martha Sigrist
Joy Herron
1933

Max Ackerman
Donald Martin
Florence Binkley
Pearl Black
Aileen English
Vera Guy
Evelyn Jones
Wilma Martin
Martha Maurer
Imogene Mathey
Marjorie Nelson
Anabelle Rudolph
Dorothy Blazenhauer
Margaret Jones
1932

Otis Finley
Frank Hownstine
Richard Jones
Kenneth Knight
Kenneth Markham
Donald Riggle
Beatrice English
Elsie Keller
Jewel Ketzler
Lois Weaver

1931

Bert Brick
John Grimes
Lewis Hothem
Edna Binkley
Helen Cope
Alice Gordon
Mary Rice
Helen Williams
Grace Wiggington
Harold Williams
1930

Eugene Gordon
Eugene Mathey
Julius Mathey
Francis Maurer
Garnet Albaugh
Vera Binkley
Edna Fulk
Mary Laughlin
Anna McKinney
Bernice Pyle
Nora Rice

1929

Walter Eyster
Elmer Harris
Glen Hownstine
Robert Markley
Louis Mathey
Clarence Speaker
Charles Wagner
Bernice Duerr
Esther Farber
Minna Fehr
Irene Finley
Doris McVan
Nancy Norris
Irene Stokes
Wilma Waltz

1928

Calvin Birk
Charles Farber

1928

Joe Ludlam
John Mathey
Marjorie Ackerman
Wilda Albaugh
Marjorie Brick
Ethel Pearl Jones
Doris Nixon
June Riggie
Lucille Robertson
Doris Whitten

1927

Howard Dolvin
Harry Hothem
Thomas Morris
Maurice Voelm
Martha Black
Leonora Fehr
Hopalene Humrighouse
Marjorie McDougall
Geraldine Osborne
Frances Wilson
Elsie Lappin Tressel

1926

Howard Duerr
Carl Hownstine
Max Lebold
Carl Lebold
Walter Smoot
Edward Straub
Howard Wagner
Virginia Beucler
May Farber
Esther Sarbaugh
Helen Schwartz

1925

Ira Brick
Robert Huff
Alphonse Mathey
Frederick McKinney
Glenwood Myers

1925 (cont.)

John Norris
Carl Patterson
Harold Pyle
Clarence Ripple
Harold Schneider
George Tressell
Delynne Turvey
Dorothy Readle
Alberta Eberly
Ella May Kuecher
Elizabeth Ludlam
Ruth Luthy
Violet Mathey
Frances Moore
Martha Patterson
Iva Turvey

1924

Paul Gordon
George Norris
Clarence Keidenbauth
Howard Sarbaugh
Ernest Stahleker
Ross Wagner
Esther Bell
Irma Beucler
Mary Brick
Norva McCreery
Blanche Robertson
Catherine Schneider
Helen Wagner

1923

Ludwig Birk
James Farber
Ralph Finley
Thomas Jones
Carroll Markley
Robert Weaver
Lillian Barkheimer
Harriet Edwards
Helen Klein
Eulalia Ludlaw
Hallie Lechner

1923

Clara Mizer
Katherine Oberlin
Ethel Oswald
Fay Riggle
Elizabeth Winger

1922

Virginia Berry
Zetta Collins
Gwendolyn Edwards
Zua Evans
Ethel Huff
Mildred Jones
Ruth McDonald
Hazel Myers
Helen Reidenbough
Blanche Leckner
Gilbert Lindsay
Harold Oswald
Byron Tressell
Mary Mathey

1921

Myron Bender
Charles Blythe
William Caddy
Walter Wagner
Howard Weaver
Orpah Birk
Cora Ferrell
Alice Gilbow
Grace Finley
Joan Retzler
Florence Stevens
Margurite Shankle

1920

Eugene Ash
Louis Beucler
Angus Mathey
Donald Oswald
Russell Zimmer
Maxine Skells

1919

Theodore Markley
John Mercer
Francis Walsh
Blanche Berry
Nora Jones
Mary Retzler
Minnie Robertson

1918

Ivan Derthick
William Graham
Lester Weaver
Harry Welker
Evelyn Diver
Joy Klein
Clara Myers

1917

Gerald Black
Theodore Black
Clifford Finley
Carl Johnson
William Thompson
Ruth Johnson
Louise Olivette
Florence Osborne
Alice Patterson
Laura Slutz

1916

Charles Black
Van Bender
Nora Oberlin
Donald Albough,
having completed
his four years in
1915, received his
diploma this year.

1915

No Class

1914

Hazel Strawn
Ethel Eick
Mildred Graham
Mable Fehr
Leslie Graham
Donald Albough

1913

Kenneth Weaver ✓
Cecil McDonald
Margaret E. Jones
Margaret A. Jones
Gertrude Wehrli
Vera McKinney
Faye Reid

1912

Merle Rice
Beulah Walsh
Fay Edwards
Theresa Stevens
Donald Wise
Oscar Geckler
Cora Limbaugh
Adelia Esenwine
Nell Morris
Helen Weller

1911

Joe Rhodes
Charles Pake
Levi Albough
Howard Sawyer
Janet Lindsay
Minnie Laffer
Maggie Smith

1910

Calvin Zimmer
Laura Edwards
Chloe Sattler
L. Harold Booker

1909

Lillie Smith
Mary Meagher
Stella Albright
Ray Myers
Faby Dixon
Ralph Weller

1908

Hazel Puncheon
Hazel Black
Ralph Jesse
Ruth Ludlam
Dorothy Edwards ✓
Cora Geckler
Glendon Stevens ✓

1907

Grace Weller
Randall Brothers

1906

Finis Chalmers
Maud Straub
Paul Winger

1905

Helen Walter
Frank Finley

1904

C. C. VanVorrhis
Benjamin Anslow
W. A. Sawyer
Helen Ferguson
Verna Leins
Tillie Wiest

1903

Della Winger

1903--C. A. Giles
Jean Chalmers

1902--Amelia Miller

1901--No Class

1900--Love Puncheon
Frances Ferguson
Lottie Hall
Jay Dolvin

1899--Anna Bierly
Ross Weller
Curtis Skeels
Ira Bixler
Richard James
Bessie Gordon
Christiana Chalmers

1898--Ola Kugler
Bertha Edwards
Oscar Sattler
Fred Sattler
David Puncheon
Robert Robertson

1897--No Class

1896--Bertha Sparks
Shirley Weaver
Ralph Finley
Anna Miller
Alice Klein
C. W. Willigman
John Houze

1895--W. J. Weaver
Glen Goodrich
Daisy Weller
Emerson Walter
Lottie Kugler
Maud Sattler
Ada McKee

1894--Garfield Sparks
W. H. Weaver
Myrtle Fishley
Emma Rice
May Hott

1893--Maud Owens
J. E. Wagner
Ida Bierly
Nora Kugler
Nilan W. Slutz
Margaret Walsh

1892--D. O. VanKirk
Carrie Dickson
Mary Bell
Eva Hall
Anna Thomas
Katherine
Bierly

1891--Mary Bierly
Lizzie Leslie
Sadie Adams
Catherine
O'Brian
Laura Slutz

1890--Emma Sattler
Nora Morrison
Sylvia Brick
Ida Sattler
Cora Furney
G. L. Gordon

1889--William Leslie
Jennie Sattler

336 graduated at Mineral City High School during the years of 1889 and 1940

COMPLIMENTS of
Ceramic Co.
East Sparta, Ohio

Dear Friends:-

We would like to take this opportunity to thank all the people who have advertised in this annual.

Also we wish to thank Mr. Huff for his cooperation in making our dreams of the annual come true. We appreciate what each teacher has contributed to this book to make it a success.

Sincerely,

The Seniors